



# EUROFINS SCIENTIFIC

## WHAT IS IT?

**EUROFINS MEGALAB** forms a part of **EUROFINS SCIENTIFIC** group, which together with **EUROFINS BIOPHARMA** are the world leaders in Clinical Trials.

Our center **ADME BIOANALYSES** is the exemplary center in services of Pharmacokinetics and Metabolism of pharmaceutical drugs.

The **CLINICAL DIAGNOSTIC** division invests into knowledge and the development of laboratory network, offering worldwide services in **Clinical Analysis, Genetics and Anatomical pathology** amongst others.



**+5**

BILLIONS IN SALES



**+50.000**

EMPLOYEES



**+40**

COUNTRIES

## LEADER IN THE GLOBAL AND LOCAL MARKET

**N°1 worldwide**

START 1987



**FOOD & FEED TESTING**

~ EUR 2-3 Billions

**N°1 to N°3 worldwide**

START 2000-2005



**TESTING FOR PHARMA/  
BIOTECH/ AGROSCIENCES**

~ EUR 5 Billions

**N°1 worldwide**

START 2000



**ENVIRONMENT TESTING**

~ EUR 4 Billions

**Start-up**

START 2014



**CLINICAL DIAGNOSTICS**

~ EUR 166 Billions





# CLINICAL DIAGNOSTIC







# EUROFINS MEGALAB

## QUICK OVERVIEW

Pioneers in the field of Genetics and Molecular Biology



**130M**

ANNUAL SALES



**40M**

TESTS



**3.4M**

PACIENTS/YEAR



**65**

HOSPITAL  
LABORATORIES

providing services  
to more than 6000  
beds 24hr x 365d



**42**

OUTPATIENT  
LABORATORIES



**1,200**

EXTRACTION  
POINTS

Eurofins Megalab is committed to **Gender Equality** within our team. This specific program started in 2013 and since then has been continuously delivering notable results in **Pay Parity and access to Executive positions.**

## CLIENT TYPES



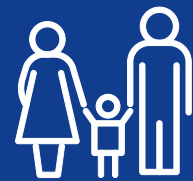
**HOSPITALS**



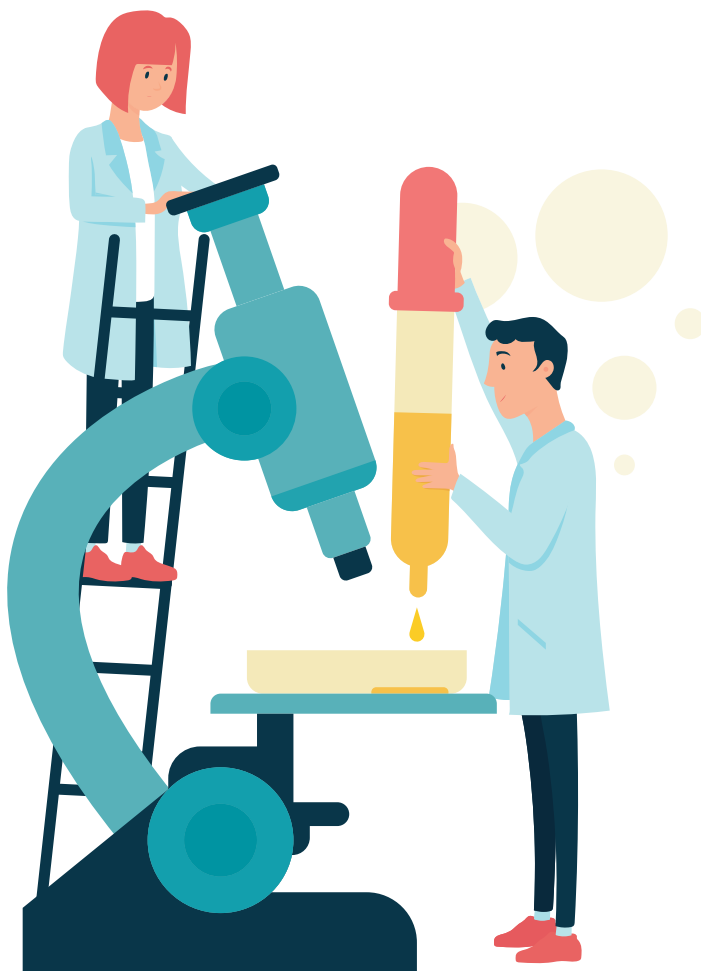
**MUTUAL INSURANCE  
COMPANIES AND  
RISK PREVENTION  
COMPANIES**



**CLINICAL  
ANALYSIS**



**PRIVATE  
CLIENTS**



## AREAS OF SERVICE

### HOSPITAL AREA

- 24 hr / 365 day support
- Hospitalized and urgent patients
- Rapid test result delivery

### OUTPATIENT AREA

Support in patient diagnostics from external consultations and minimized pressure in test result delivery

### SPECIFIC TESTS

Specific clinical analyses with high scientific and technological components



# WHAT CAN WE DO FOR YOU?

01



## Personalized kits for the trial

Stock control

Analytic plan and on-site training

02



## International level logistics

Collection and shipping of samples

08



## Clinical follow-up

Post clinical trial support in  
diagnostics and patients' follow-up

07



## Quality certificate

03



### Central laboratory

Sample processing  
From glucose to WGS

04



### Database

Integrated results reports  
(per patient and per trial)  
Data management

06



### Global project management

Scientific support team  
Project manager at client's disposal

05



Storing capacity of  
any types of samples

## WHAT ARE OUR CLINICAL AREAS?



**CLINICAL  
ANALYSIS**



**CLINICAL  
GENETICS**



**ANATOMICAL  
PATHOLOGY**



**CLINICAL  
IMMUNOLOGY**



**CLINICAL  
MICROBIOLOGY**





# HOW DO WE WORK WITH OUR CLIENTS?



## PROXIMITY

We offer close and personalized attention.



## FLEXIBILITY

We adapt to the specific needs of each and every one of our clients.



## CONFIDENTIALITY

We value ethics and we guarantee quality and confidentiality of your data.

## SOME OF OUR CURRENT CLINICAL TRIALS

- **Medication for treating Acute Ischemic Stroke** in hospitalized patients  
Collaboration with the Biotechnology industry.
- **Medication against SARS-COV-2** in hospitalized patients  
Collaboration with the Pharmaceutical industry.
- **Immunity through vaccination against SARS-COV-2**  
Interhospital collaboration.
- **Prevention of cardiovascular diseases** through promoting healthy lifestyle  
Collaboration with Nacional Center of Cardiovascular Diseases (CNIC-IES Carlos III).
- **Alzheimer's disease**  
Collaboration with the Complutense University of Madrid.
- **Hepatic toxicity in patients with Multiple Sclerosis**  
Collaboration with the company Salud Digital.

# FEEDBACKS FROM OUR CLIENTS

## COO Sanitary services

"We can verify the excellent quality of services carried out by Ensayos Megalab team. They adapt to every individual need, provide wide territorial coverage and their work is carried out according to the strictest international standards of safety, security and confidentiality."

**X.B.**

## CSO Sponsor

"Our experience with Megalab is excellent. The communication is always great and they always show willingness to work as a team and to carry out projects in the best possible manner."

**M.H.**

## PhD, Msc University

"Their team is perfectly coordinated; they adapt to your needs and offer solutions to any problem. Apart from that, their offered marker panels not only have a competitive price, but they are also analyzed using approved methods and with tools that comply with all the quality and security requirements providing the best possible results."

**L.B.**

## COMMITMENTS



QUALITY



INTEGRATION



ENVIRONMENT

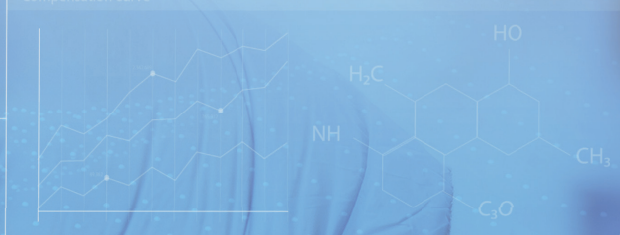


EDUCATION

Development analysis



Compensation curve



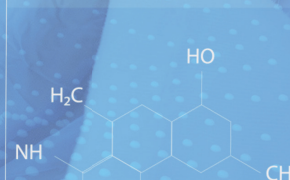
Research

Engineering

Scanning Biomedical

Neuroscience

Human research



Diffusion scheme

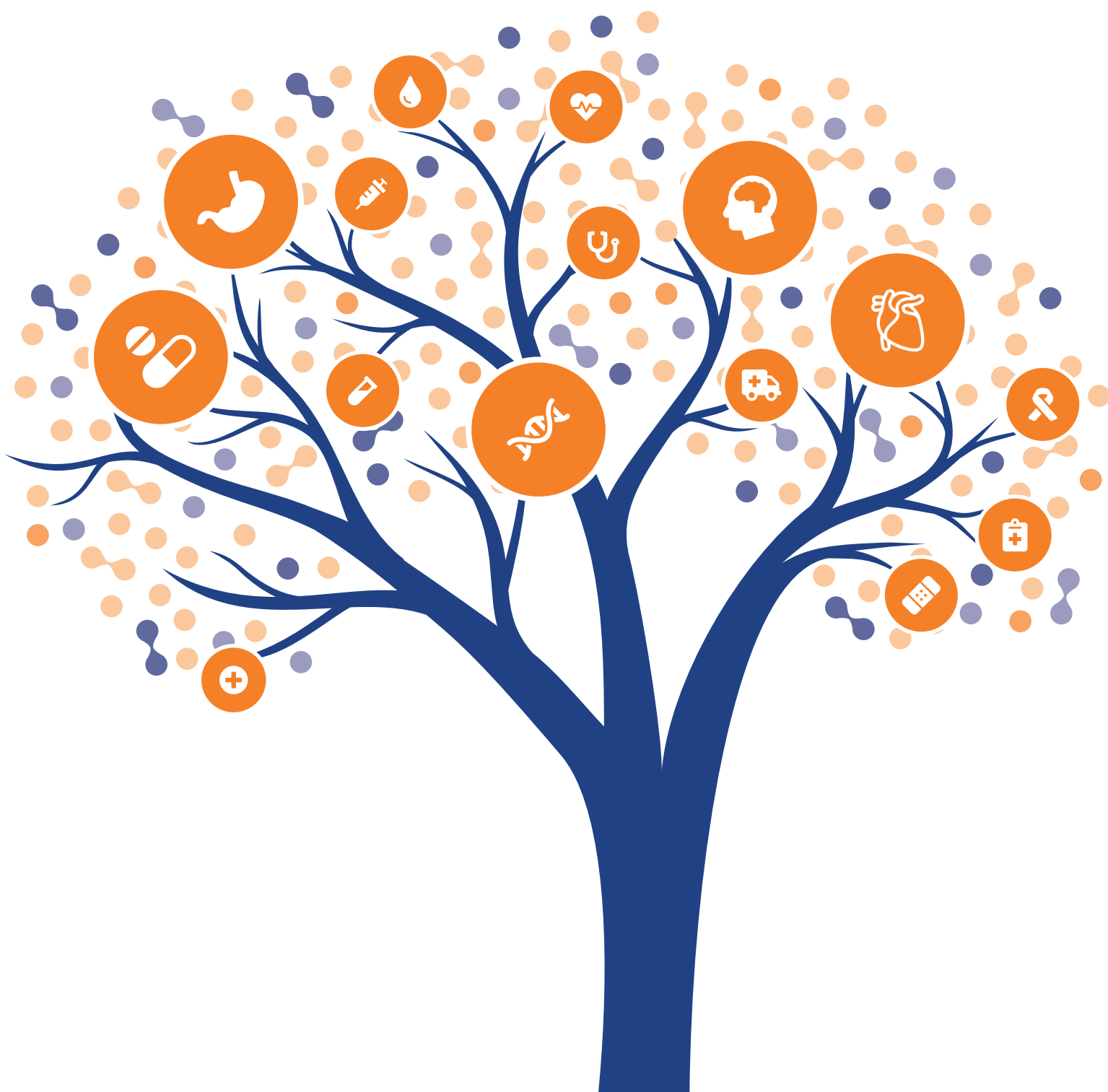




[illegible]



# MEGALAB





eurofins

MEGALAB

EUROFINS MEGALAB owns the largest network of Hospital and Outpatient Laboratories in Spain.

## CONTACT US

We will attend you in **personalized manner**

### Certifications:

ISO 15189

ISO 9001

ISO 14001

ISO 45001

### External quality programs:

SEQC, AEFA, NEQAS, CAP

SEAP, SEIMC

**Eurofins Megalab**

ensayos@megalab.es  
www.eurofins-megalab.com

